

NE Polk County US 27 Mobility Study from SR 60 to Lake County Line

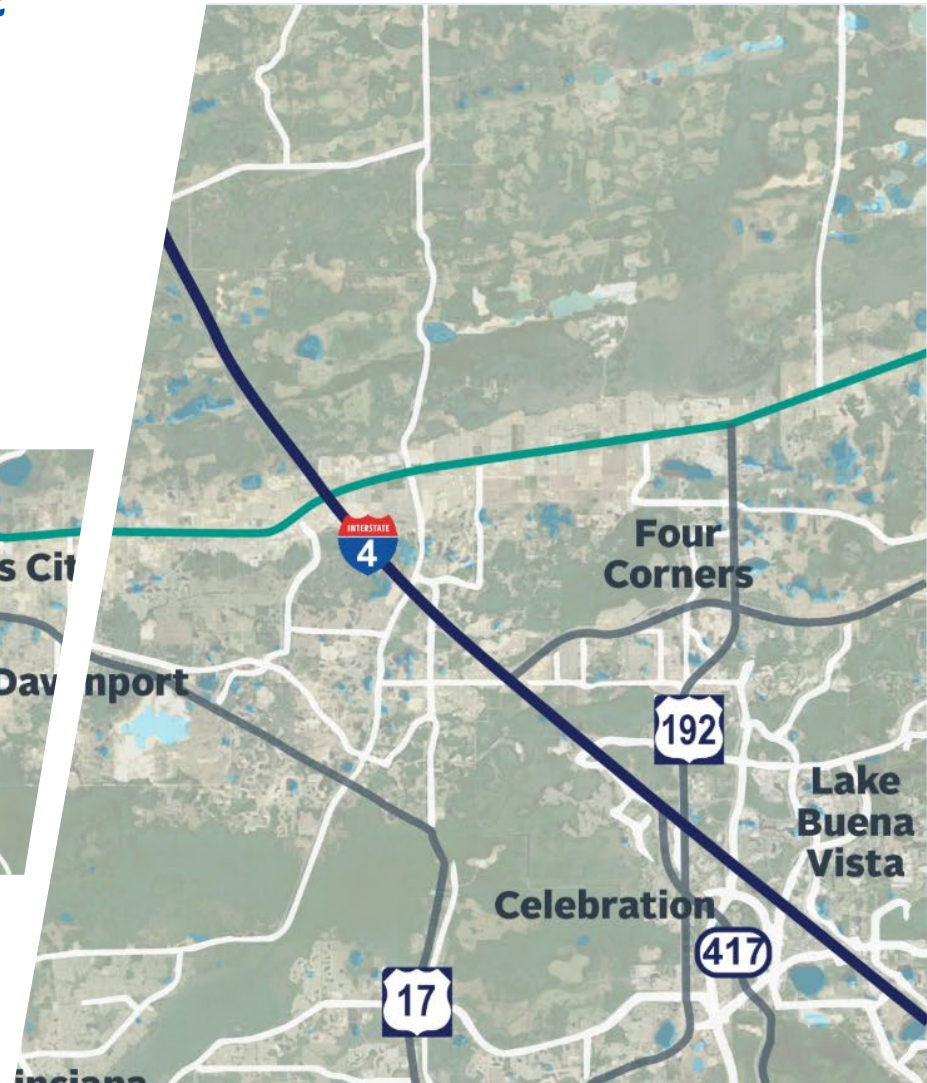
FPID 440320-1-22-01



Project Advisory Group (PAG)

Meeting #1

November 13, 2018



Agenda



- » Project Advisory Group
- » Introductions
- » Project Overview
- » Stakeholder Engagement
- » Corridor Initiatives
- » Mobility and Accessibility Issues Discussion





Project Advisory Group



Group Purpose: Facilitate collaboration between stakeholders to ensure study outcomes consider input from all perspectives.

Group Makeup: Members with specific knowledge of the US 27 corridor and/or surrounding study area who can provide critical information and input to help guide the NE Polk US 27 Mobility Study.

Members Include:

- City & County staff involved with planning, development, engineering
- Metropolitan/Transportation Planning Organization (M/TPO) Staff
- Regional Planning Council Staff
- Business Community Representatives
- Economic Development Council Staff
- Transportation Service Providers
- Florida Department of Transportation Staff
- Environmental Agency Staff





Project Advisory Group



PAG Member Expectations:

- » Attend meetings throughout life of study (6 to 7 meetings over 30 months)
- » Provide expertise, information, input into the NE Polk US 27 Mobility Study
- » Represent the interests of your larger agency, community, business, etc.
- » Act as a link between your agency or community or business and the project team to share information
- » Provide input into measurable objectives, evaluation criteria, and potential alternatives





Project Advisory Group



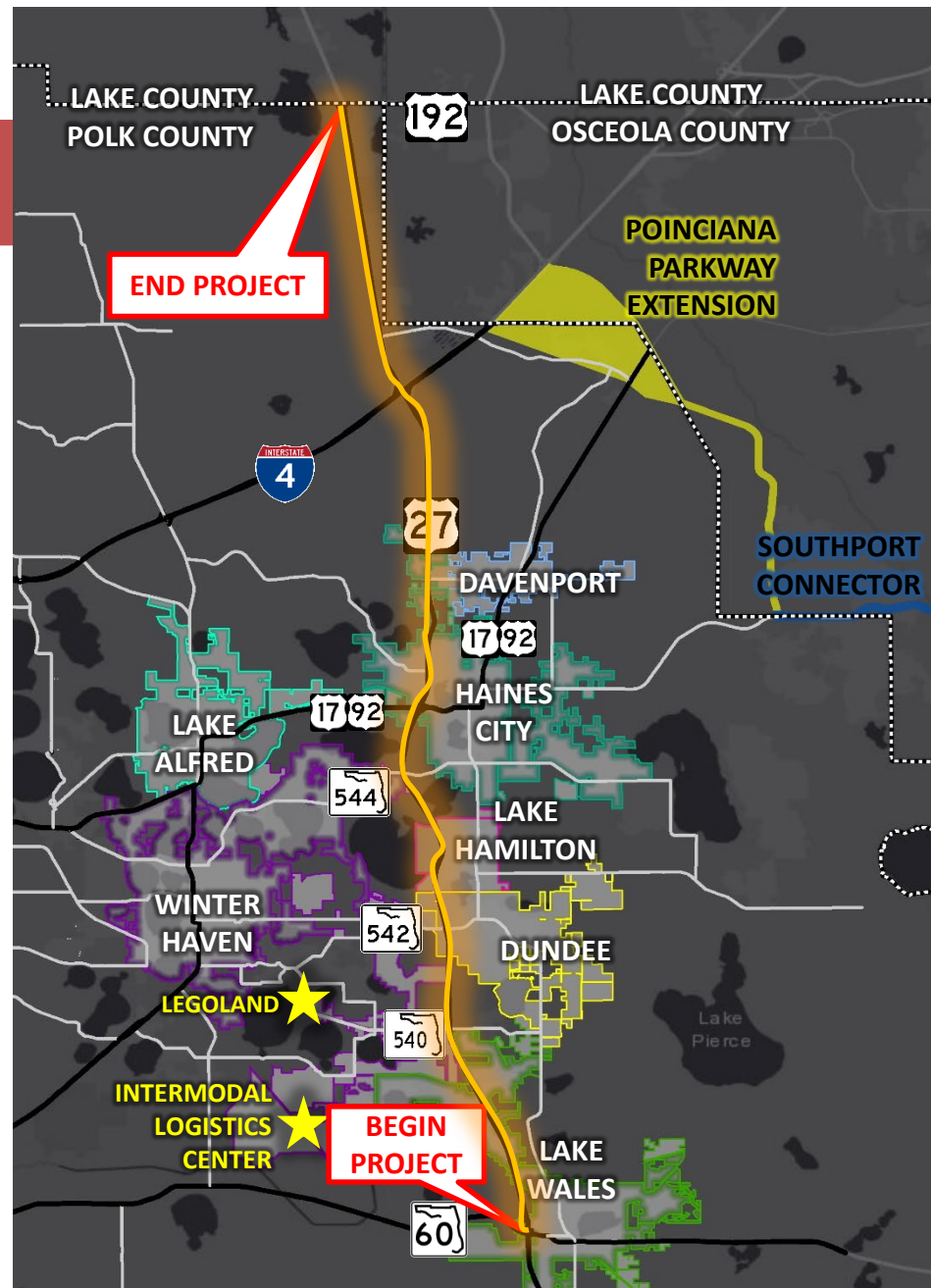
Introductions





Project Location

- » 32 mile long State of Florida Strategic Intermodal System (SIS) highway corridor in Polk County
- » Critical north-south freight corridor throughout and beyond Florida
- » Commercial, industrial, residential development on both sides

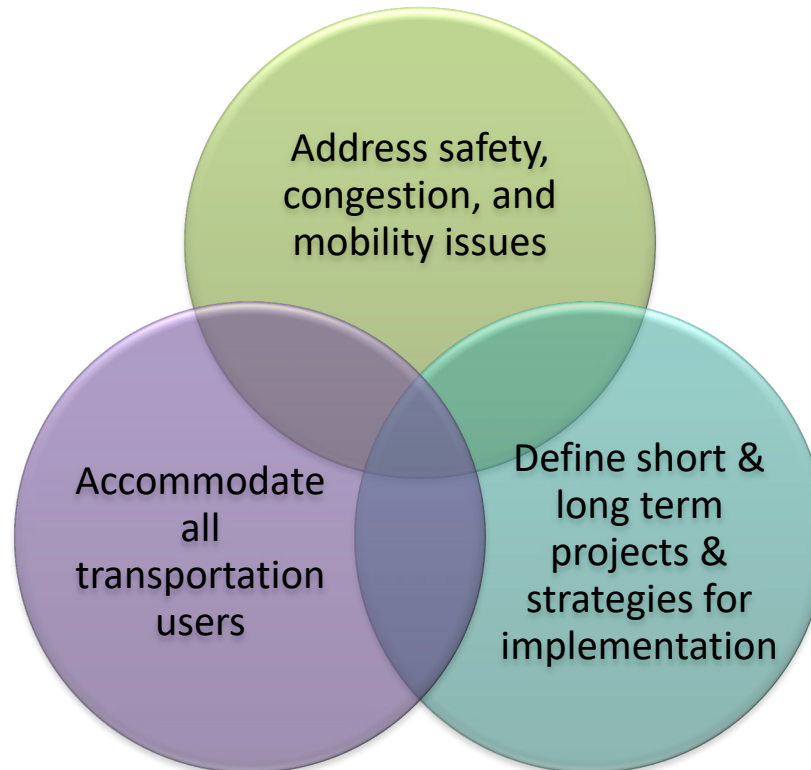




Project Purpose



Define a multimodal program of projects and strategies to improve the mobility, safety, and livability within and served by the US 27 corridor.





Project Process



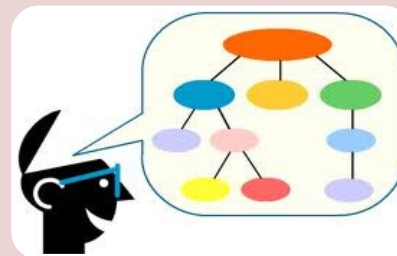
Phase I – Define the Problem



Initial
Stakeholder
Outreach



Collect Data



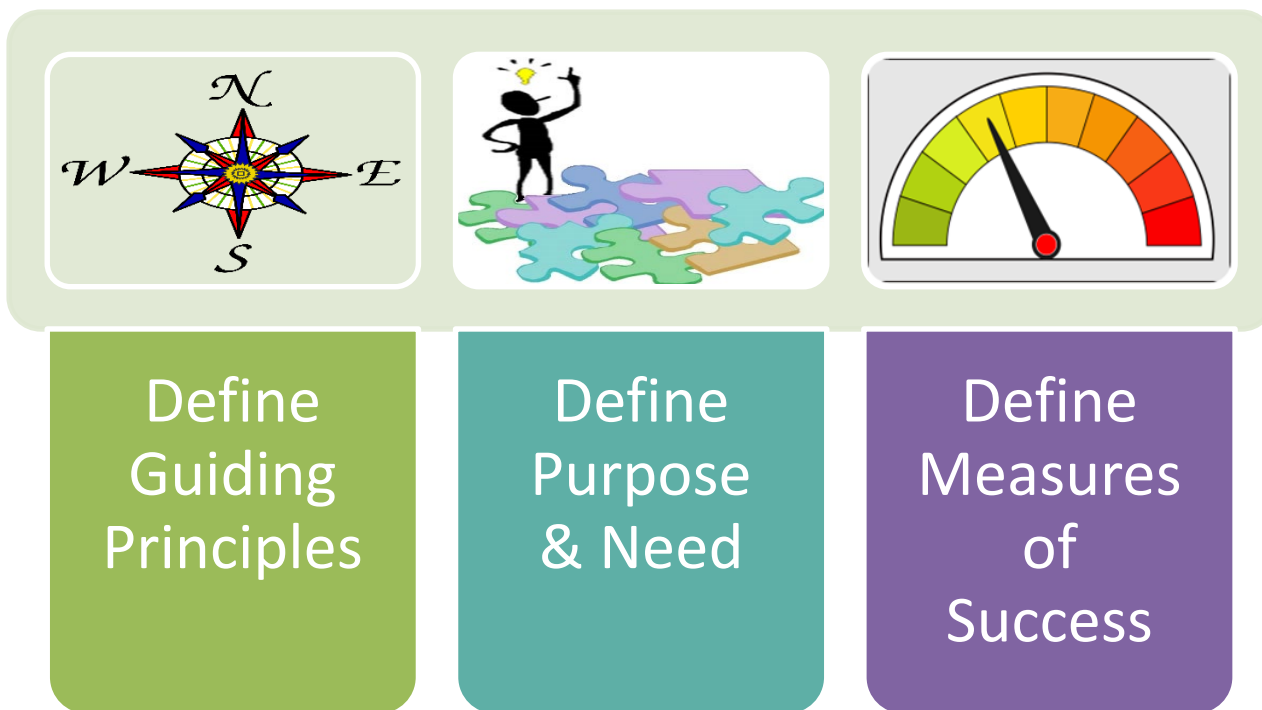
Synthesize
Issues and
Opportunities



Project Process



Phase II – Define Guiding Principles

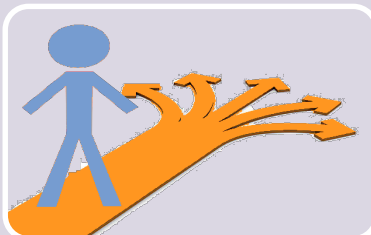




Project Process



Phase III – Define & Select Alternatives



Define
Alternatives

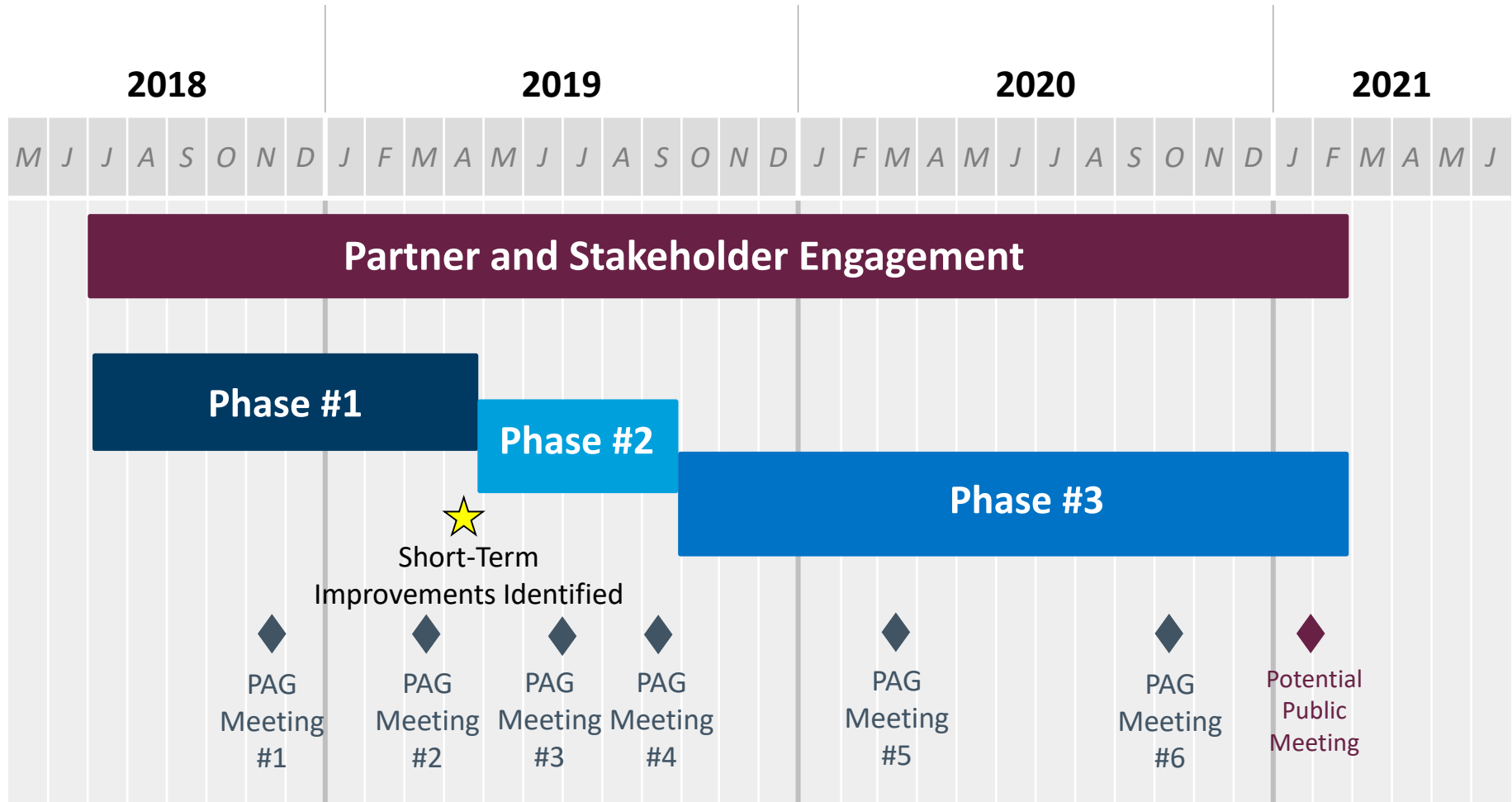


Compare
Alternatives



Select
Alternatives
&
Determine
Next Phase

Schedule



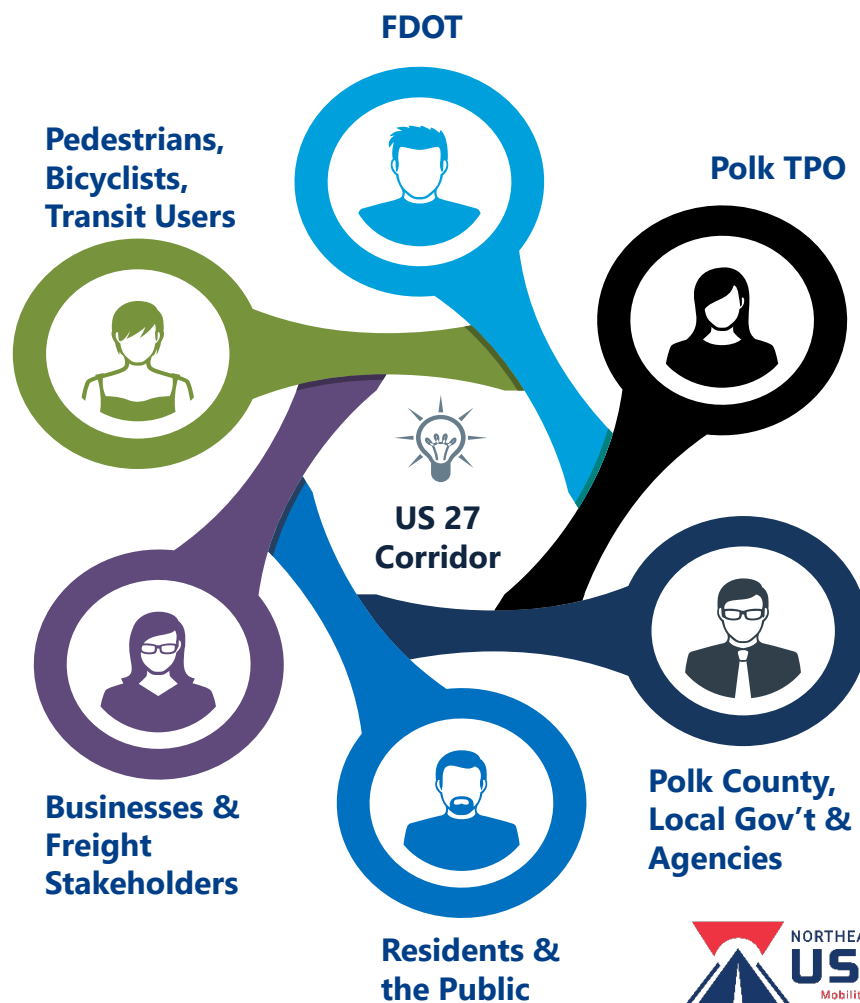


Participation



Public and Stakeholder Involvement

» Who will be involved?



Stakeholder Interview Summary



Polk County Commissioners	Municipalities	Freight Operators	Economic
» District 1 George Lindsey	» Davenport	» Saddle Creek Transportation	» Central Florida Development Council
» District 2 Melony Bell	» Haines City	» Sherwin Williams Distribution Center	» Winter Haven Economic Development Council
» District 3 William Braswell	» Lake Wales	» Walmart Distribution Center	
» District 4 Todd Dantzler	» Winter Haven	» Oakley Transportation	
» District 5 John Hall	» Dundee	» Sunland Distribution	
	» Lake Hamilton		

Matrix of Common Themes



Stakeholder Theme	BOCC	Municipalities	Freight	EDC
Balance the needs of multiple users	X	X	X	X
Develop alternative routes	X	X	X	
Safety	X	X	X	
Improve access	X	X	X	X
Support economic activities (including freight movement)	X	X	X	X
Communication	X	X	X	X
Accommodate growth	X	X		X
Provide connectivity	X	X	X	X
Expand transit/multimodal network	X	X		X



Polk County Commissioners



Highlights

- » Show incremental progress during the study
- » Keep Commissioners informed of progress
- » Streamline certain planning activities where it is efficient and effective for timing purposes
- » Social media is the best way to engage the public



Municipalities



Highlights

- » Identify specific roadways to improve
- » Create alternative routes and improve connections
- » Plan for multimodal improvements, especially sidewalks and intersection improvements
- » Use social media to engage public, but some areas need traditional outreach efforts



Freight Operators



Highlights

- » Open to using toll roads if time savings outweigh cost of tolls
- » Support frontage roads along US 27 to minimize access points
- » Increase length of traffic signals' yellow phase
- » Currently meeting delivery schedules



Economic Development



Highlights

- » High interest and activity near I-4 interchanges
- » Freight and logistics are natural economic development clusters for Polk because of access to Orlando and Tampa
- » High tech in future with growth of Florida Poly
- » Support for extension of SunRail



Common Themes – PAG Input



- » Do these themes represent what you believe should be focus areas for the study?
 - Balance the needs of multiple users
 - Develop alternative routes
 - Safety
 - Improve access
 - Support economic activities
 - Communication
 - Accommodate growth
 - Provide connectivity
 - Expand transit/multimodal network
- » Should anything else be considered/added?



Stakeholder Interviews - Strategies to Consider on US 27



- » Adding capacity to US 27
 - » Managed Lanes (Feasibility Study by FTE)
- » Frontage roads along US 27
 - » Haines City area
- » Intersection improvements
 - » 35 primary intersections
 - » Interchanges at major intersections
 - » Enhanced truck clearance interval
- » Multimodal improvements
 - » Local transit agency (Citrus Connection)



Stakeholder Interviews - Strategies to Consider off US 27



- » Supporting network
 - » Widen existing corridors
 - » US 17/92
 - » SR 544
 - » CR 557
 - » CR 547
 - » CR 580
 - » New corridor connections
 - » Southport Connector (Central Florida Expressway)
 - » Poinciana Parkway Extension (Central Florida Expressway)
- » Intersection improvements
 - » 15 secondary intersections



Stakeholder Interviews - Strategies to Consider off US 27



- » I-4 Area Improvements
 - » CD System: US 27 to Champions Gate/World Drive
 - » Express Lanes on I-4 (part of BTU)
- » Regional Corridors
 - » Multimodal Regional Corridors
 - » *Brightline*
 - » *Sunrail*
 - » Improve Existing regional Roadways
 - » *SR 60 from Indian Lakes to Turnpike*
 - » New Regional Roadway
 - » *Connection from US 27 east to Poinciana Pkwy/Southport Connector*



Next Steps – Phase 1



- » Data collection
- » Issues and opportunities synthesis
- » Stakeholder outreach
- » Public engagement



Next Steps – Public Engagement



- » Use social media to reach most stakeholders
- » MetroQuest online surveys
- » Coordinate with municipalities for traditional outreach efforts
- » Project website



<http://swflroads.com/us27/mobilitystudy/>



Project Advisory Group



Wrap Up

Questions / Comments from PAG Members

- Input on future meeting time, location, duration
- Best ways for information sharing
- PAG member changes, contact information



Contact Information



Sarah Catala

FDOT District One Project Manager

(239) 225-1981

Sarah.Catala@dot.state.fl.us



Rick Langlass

RS&H Consultant Project Manager

(813) 636-2684

Rick.Langlass@rsandh.com

